



Est. 1986

**GAMCO CORPORATION**  
 MANUFACTURERS OF FENESTRATION PRODUCTS

Tel: (718) 359-8833  
 Fax: (718) 359-8661

**W250C COMMERCIAL GRADE / W250HC HEAVY COMMERCIAL GRADE SYSTEM**

**W250/W250HC SERIES**



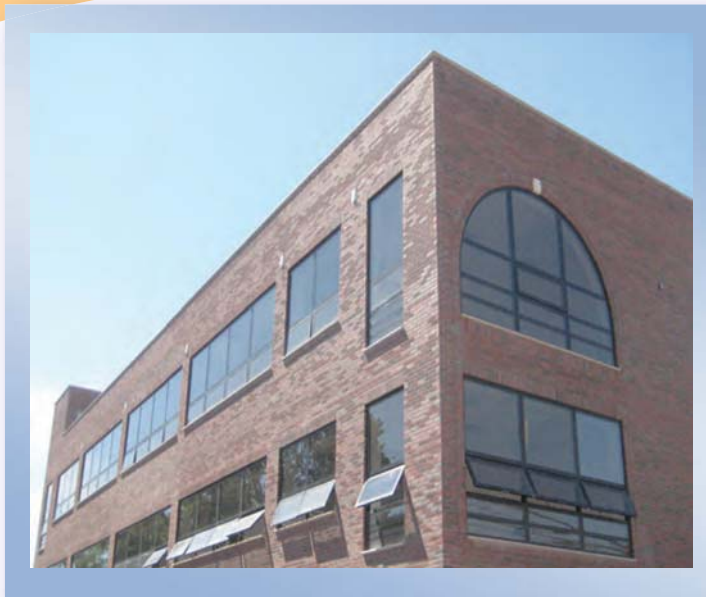
Awning Windows



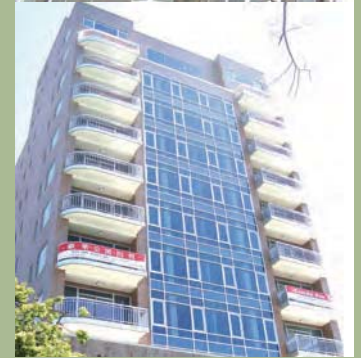
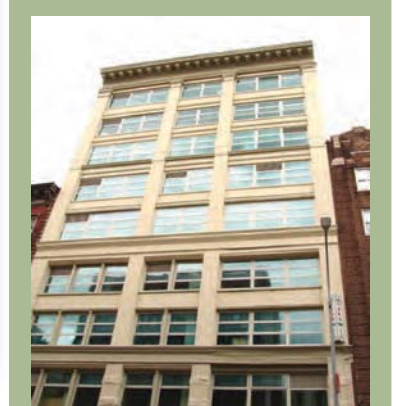
Hopper Windows



Casement Windows



**Clear Anodized  
 Dark Bronze Anodized  
 White Painted  
 Bronze Painted  
 Custom Finishes Available**



**AW Rating**

**Features & Options:**

- 2-1/2" Profile / Thermal Break
- Commercial Grade: 1/16" Wall Thickness.
- Heavy Duty: 1/8" Wall Thickness.
- 1/4" or 1" Glass Prep.
- 4-Bar Hinges / Cam Handles (Windows)
- Butt Hinges / Rotary Handles
- Multi-Point Lock (Casement)
- Screen (Optional)



ROTARY HANDLE

**SUMMARY OF TESTING PERFORMANCE**

TYPE	W250C	W250HC
AWNINGS	P-C 65	P-HC 70
HOPPERS	P-C 65	P-HC 70
CASEMENT	P-C 65	C-HC 100
CASEMENT		C-AW 60
FIXED LITE		F-C 110

*Celebrating Over 25 Years of Quality Manufacturing*