



Est. 1986

BD-325 SERIES BALCONY DOORS

BD-325 SERIES



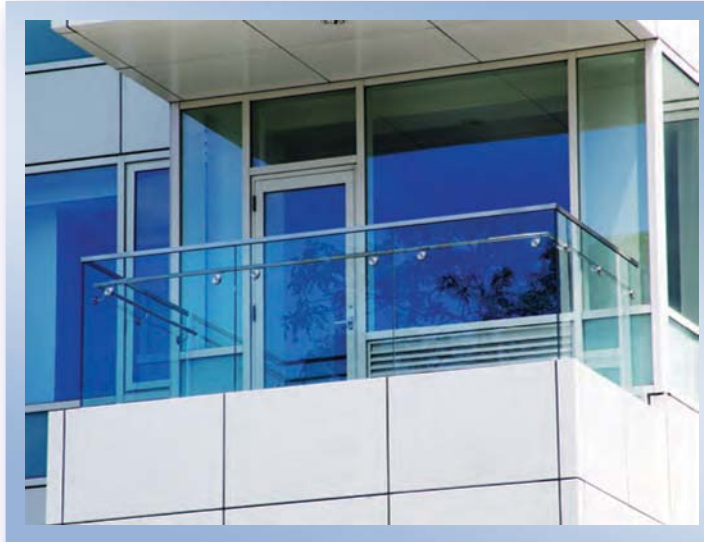
Single Door



Pair Door



Single Door with Transom



**Clear Anodized
 Dark Bronze Anodized
 White Painted
 Bronze Painted
 Custom Finishes Available**

AW50 Rating

Features & Options:

- 3-1/4" Frame Profile
- 1/8" Wall Thickness
- Insul-bar Thermal Break
- 1" Insulated Clear Tempered Glass
- European Locket
- Multi-Point Lock System
- Double Door Available
- Transom and Sidelite
- In - Swing and Out - Swing



**HANDLES WITH
 LOCKSET**

PERFORMANCE

| TYPE | DESCRIPTION | BALCONY DOOR |
|---------------|--|--------------------------|
| SIZE | (WIDTH X HEIGHT) | 48" X 96" |
| ASTM E 283-04 | STATIC PRESSURE AIR INFILTRATION (6.27 PSF) | 0.10 CFM/FT ² |
| ASTM E 547-00 | CYCLIC PRESSURE WATER RESISTANCE (10.03 PSF) | NO LEAKAGE |
| ASTM E 331-00 | STATIC PRESSURE WATER RESISTANCE (10.03 PSF) | NO LEAKAGE |
| ASTM E 330-02 | UNIFORM LOAD DEFLECTION ± PRESSURE | 50 PSF |
| | UNIFORM LOAD STRUCTURAL ± PRESSURE | 75 PSF |

