



Est. 1986

GAMCO CORPORATION

MANUFACTURERS OF FENESTRATION PRODUCTS

PRODUCT LINE CATALOG



Celebrating Over 25 Years of Quality Manufacturing



Est. 1986

GAMCO CORPORATION
MANUFACTURERS OF FENESTRATION PRODUCTS

Tel: (718) 359-8833
Fax: (718) 359-8661

CORPORATE PROFILE



GAMCO Corporation is a premier manufacturer of quality fenestration systems and special architectural metal façade and building elements. The company custom manufactures complete systems for storefront, curtain wall, skylights, interior glass walls, solariums and sunrooms, as well as a broad spectrum of exterior and interior architectural metal components. GAMCO products have graced many notable buildings in the New York Metropolitan Area since 1986.

History

The GAMCO story is one of vision, hard work and commitment to excellence. The company was founded by John Chang and his wife Beatrice Chew as a full-service storefront glazing and installation company, for builders and property owners in New York City. Despite their diligence and attention to detail, they were not satisfied with the quality and service GAMCO's fenestration suppliers offered. Chang and Chew then made the bold move away from installation services to manufacturing products themselves. This change of focus enabled GAMCO to deliver the quality, customization and design distinction its customers demanded.

GAMCO has since expanded its physical plant twice. Its strategic growth has been carefully planned and steady, each step responding to an opportunity to fulfill a market need or set a trend. GAMCO has cultivated a vast network of dealers to handle sales and installations, and is expanding outside the New York City region along the East Coast.

Strengths and Capabilities

GAMCO products are consistently the highest in quality, made with old-world custom craftsmanship that only expert fabricators can render. Its fenestration systems are designed to completely integrate with other architectural elements, with exactly matching finishes and style on every component.

GAMCO's experience and dedication is apparent in all aspects of a project – from concept, through engineering and production to delivery. The firm's highly trained and longtime staff has developed and honed the company's technical expertise. Because GAMCO began as an installation firm, its knowledge of building construction ensures flawless product customization every time.

GAMCO's customer service is exemplary, evident from the moment of consultation to project completion. Reliability is paramount for GAMCO, and its customers have come to expect the high level of confidence and satisfaction that GAMCO delivers.

GAMCO's custom manufacturing utilizes industry-leading equipment and machinery with a wide array of capabilities to create any design. Automated CNC hydraulic shear and punch presses, brake metal bending equipment and fine finishing and polishing machinery allow GAMCO technicians to produce beautiful architectural and fenestration components.

Products

GAMCO offers a full range of custom products including:

- ☐ Storefront and entranceway systems
- ☐ Skylights and solariums
- ☐ Window and curtain wall systems
- ☐ Commercial aluminum terrace and sliding doors and windows
- ☐ Special metal cladding for entrances and storefronts
- ☐ Aluminum polished column covers
- ☐ Custom architectural railings
- ☐ Ornamental grills and covers
- ☐ Unique metal and glass sales and informational displays
- ☐ Custom metal and glass structural elements
- ☐ Interior glass walls



Markets and Geographic Regions

GAMCO serves architects, specifiers, contractors, construction professionals and property owners and managers throughout the New York Metropolitan Area and is expanding beyond. Working closely with its network of dealers and installation companies, GAMCO has manufactured high-end fenestration systems and custom architectural metal appointments for commercial offices, cultural and public institutional properties, high-rise multi-family residential and mixed-use buildings, landmark and historic properties, and public transportation venues.

Celebrating Over 25 Years of Quality Manufacturing



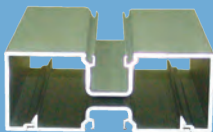
Est. 1986

GAMCO CORPORATION
MANUFACTURERS OF FENESTRATION PRODUCTS

info@gamcocorp.com
www.gamcocorp.com

FG-SERIES FLUSH GLAZE STOREFRONT

FG-450 SERIES



FG-450 (1-3/4" x 4-1/2")
Non Thermal

FG-451 SERIES



FG-451 (2" x 4-1/2")
Non Thermal

FG-451T SERIES



FG-451T (2" x 4-1/2")
Thermal Break



**Clear Anodized
Dark Bronze Anodized
White Painted
Custom Finishes Available**

The FG-450 and FG-451 storefront systems are both available in shear block and screw spline fabrication. The FG-450 utilizes 1/4" and up to 1/2" glass, while the FG-451 utilizes 1/2" and up to 1" insulated glass.

The FG-451T features thermal-break designs to reduce heat transfer and keep internal surfaces warmer. The FG-451T accepts 1" insulated glass.

Options: 1/4" to 3/4" reducers



**SHEAR BLOCKS FOR
FG-450 & FG-451**



ASTM PERFORMANCE - STOREFRONT / DOOR

TYPE		MEDIUM STILE DOOR	FLUSH GLAZE FG-450	FLUSH GLAZE FG-451
SIZE (WIDTH X HEIGHT)		3'-0" X 7'-0"	10'-5" X 8'-0"	10'-5" X 8'-0"
ASTM E 283	AIR INFILTRATION @6.24 PSF (50MPH)	2.00 CFM/FT ²	0.01 CFM/FT ²	0.015 CFM/FT ²
ASTM E 331	WATER TEST PRESSURE (NO LEAKAGE)	1.57 PSF	10.00 PSF	12.00 PSF
ASTM E 330	UNIFORM STRUCTURAL TEST TO POSITIVE & NEGATIVE PRESSURE (NO DAMAGE)	82.50 PSF	52.50 PSF	52.50 PSF

Celebrating Over 25 Years of Quality Manufacturing



Est. 1986

GAMCO CORPORATION
MANUFACTURERS OF FENESTRATION PRODUCTS

Tel: (718) 359-8833

Fax: (718) 359-8661

D-SERIES DOORS SYSTEM

D200 SERIES



Narrow Stile Door
2-1/8" Stile & Top Rail
3-1/8" Bottom Rail

D350 SERIES



Medium Stile Door
3-1/2" Stile & Top Rail
5" Bottom Rail

D500 SERIES



Wide Stile Door
5" Stile & Top Rail
7-1/2" Bottom Rail



D-Series Doors with FG-Series Flush Glaze System

FG-450 (1-3/4" x 4-1/2") Non-Thermal Break

FG-451 (2" x 4-1/2") Non-Thermal Break

FG-451T (2" x 4-1/2") Thermal Break

Features & Options:

Butt Hinge / Offset Pivot

Center Hung / Offset Hung with C.O.C / Floor Closer

Standard / C-Pull and Push Handles

Long /Short Lever Handle

Paddle Release / Panic Device

Standard Ms Lock / Latch Lock

Electric Strike / Magnetic Lock

Other options: specific hardware upon request



PANIC DEVICE WITH
LATCH LOCK

Clear Anodized
Dark Bronze Anodized
White Painted
Custom Finishes Available



ASTM PERFORMANCE - STOREFRONT / DOOR

TYPE		MEDIUM STILE DOOR	FLUSH GLAZE FG-450	FLUSH GLAZE FG-451
SIZE (WIDTH X HEIGHT)		3'-0" X 7'-0"	10'-5" X 8'-0"	10'-5" X 8'-0"
ASTM E 283	AIR INFILTRATION @6.24 PSF (50MPH)	2.00 CFM/FT ²	0.01 CFM/FT ²	0.015 CFM/FT ²
ASTM E 331	WATER TEST PRESSURE (NO LEAKAGE)	1.57 PSF	10.00 PSF	12.00 PSF
ASTM E 330	UNIFORM STRUCTURAL TEST TO POSITIVE & NEGATIVE PRESSURE (NO DAMAGE)	73.00 PSF	52.50 PSF	52.50 PSF

Celebrating Over 25 Years of Quality Manufacturing



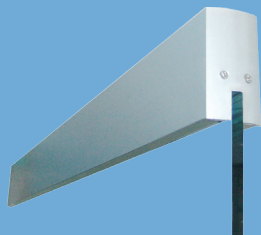
Est. 1986

GAMCO CORPORATION
MANUFACTURERS OF FENESTRATION PRODUCTS

info@gamcocorp.com
www.gamcocorp.com

HS-350 / I-LINE SERIES FRAMELESS GLASS DOORS

HS-350 SERIES



Square Shoe
1/2" GLASS

HS-350 SERIES



Patch Fitting
1/2" GLASS

I-LINE SERIES



I-Line Stiles
1/2" GLASS



Features & Options:

Header with C.O.C. / Floor Closer

1/2" Clear Tempered Glass with Polished Edges

Full Shoe on Bottom

Choice of I-line Stile

Bottom Dead Lock

Cylinder on Both Sides

1-3/4" X 4" or 1-3/4" X 4-1/2" Header

4" Mill Saddle (Cover Plate on Floor Closer)

12" Straight C-Pull Handles/ Custom Style Handles on Both Sides

Other options: specific hardware upon request

Clear Anodized
Dark Bronze Anodized
Stainless Steel (Cladded)
Brass (Cladded)
Custom Finishes Available



FLOOR CLOSER



CONCEALED OVER-
HEAD CLOSER

Celebrating Over 25 Years of Quality Manufacturing



GAMCO CORPORATION
MANUFACTURERS OF FENESTRATION PRODUCTS

Tel: (718) 359-8833

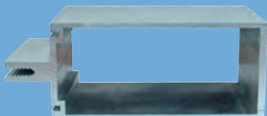
Fax: (718) 359-8661

PW-250 SERIES CURTAIN WALL SYSTEM

PW-250 SERIES



2-1/2" X 2-3/8"
Back Member

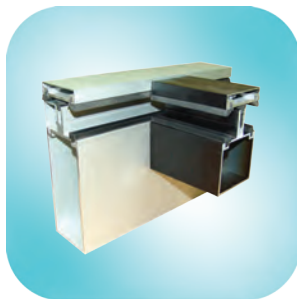


2-1/2" x 5-1/2"
Back Member



The PW-250 Series Curtain Wall System combines high quality construction with optimum performance, tailored to meet the requirements of demanding architectural wall systems. Besides enhancing architectural design and aesthetic appeal, GAMCO also provides structural design and analysis along with a full line of drafting production services. Our systems allow for factory assembly, unitizing and outside glazing without compromising integrity.

Options: 1/4" to 1" reducers



PERFORMANCE

TYPE	DESCRIPTION	CURTAIN WALL
SIZE	(WIDTH X HEIGHT)	15'-0" X 30'-0"
ASTM E 283-04	STATIC PRESSURE AIR INFILTRATION 6.24 PSF	0.01 CFM/F ²
ASTM E 331-00	STATIC PRESSURE WATER RESISTANCE	15 PSF
ASTM E 330-02	UNIFORM STRUCTURAL LOAD ± PRESSURE	60 PSF
	UNIFORM STRUCTURAL OVER LOAD ± PRESSURE	90 PSF
AAMA 501-I-05	DYNAMIC PRESSURE WATER RESISTANCE	15 PSF

INTERSTORY DIFFERENCE MOVEMENT (HORIZONTAL CYCLING)
LEFT & RIGHT (NO DAMAGE) 1.2"

Clear Anodized
Dark Bronze Anodized
Custom Finishes Available



Celebrating Over 25 Years of Quality Manufacturing



Est. 1986

GAMCO CORPORATION
MANUFACTURERS OF FENESTRATION PRODUCTS

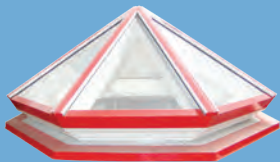
info@gamcocorp.com
www.gamcocorp.com

SK-2000 SERIES SKYLIGHTS & SOLARIUMS

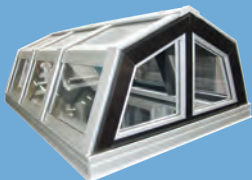
SK-2000 SERIES



Hipped End Skylight



Pyramid Skylight

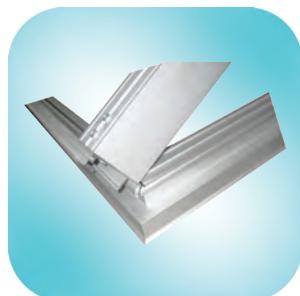


Segmented Skylight



GAMCO custom manufactures structural glass skylights and solariums for commercial applications. The SK-2000 Series skylight systems utilize extruded aluminum members with integral condensate gutter gasket pockets to channel any moisture to the exterior of the structures, thus preventing air and moisture infiltration. This offers a clean appearance, while structurally meeting the required design loads and deflection criteria. Units are available in curb mount self-flashing styles to the exact designs needed for your projects.

**Clear Anodized
Dark Bronze Anodized
White Painted
Custom Finishes Available**



GABLE CORNER

STRUCTURAL TEST SUMMARY - SKYLIGHT

TYPE		SINGLE PITCH	PYRAMID	DOUBLE PITCH
SIZE (WIDTH X LENGTH)		10'-0" X 10'-0"	8'-0" X 8'-0"	5'-0" X 10'-0"
ASTM E 283	AIR INFILTRATION @6.24 PSF (50MPH)	0.01 CFM/FT	0.01 CFM/FT	0.03 CFM/FT
ASTM E 331	WATER TEST PRESSURE (NO UNCONTROLLED LEAKAGE)	15 PSF	15 PSF	18 PSF
ASTM E 330	UNIFORM STRUCTURAL LOAD TEST (NO DAMAGE)	90 PSF	150 PSF	180 PSF

Celebrating Over 25 Years of Quality Manufacturing



Est. 1986

GAMCO CORPORATION
MANUFACTURERS OF FENESTRATION PRODUCTS

Tel: (718) 359-8833

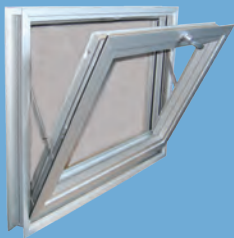
Fax: (718) 359-8661

W250C COMMERCIAL GRADE / W250HC HEAVY COMMERCIAL GRADE SYSTEM

W250/W250HC SERIES



Awning Windows



Hopper Windows



Casement Windows



AW Rating

Features & Options:

2-1/2" Profile / Thermal Break

Commercial Grade: 1/16" Wall Thickness.

Heavy Duty: 1/8" Wall Thickness.

1/4" or 1" Glass Prep.

4-Bar Hinges / Cam Handles (Windows)

Butt Hinges / Rotary Handles

Multi-Point Lock (Casement)

Screen (Optional)



ROTARY HANDLE

SUMMARY OF TESTING PERFORMANCE

TYPE	W250C	W250HC
AWNINGS	P-C 65	P-HC 70
HOPPERS	P-C 65	P-HC 70
CASEMENT	P-C 65	C-HC 100
CASEMENT		C-AW 60
FIXED LITE		F-C 110

Clear Anodized
Dark Bronze Anodized
White Painted
Bronze Painted
Custom Finishes Available



Celebrating Over 25 Years of Quality Manufacturing



Est. 1986

GAMCO CORPORATION
MANUFACTURERS OF FENESTRATION PRODUCTS

info@gamcocorp.com
www.gamcocorp.com

BD-325 SERIES BALCONY DOORS

BD-325 SERIES



Single Door



Pair Door



Single Door with Transom



AW50 Rating

Features & Options:

- 3-1/4" Frame Profile
- 1/8" Wall Thickness
- Insul-bar Thermal Break
- 1" Insulated Clear Tempered Glass
- European Locket
- Multi-Point Lock System
- Double Door Available
- Transom and Sidelite
- In - Swing and Out - Swing

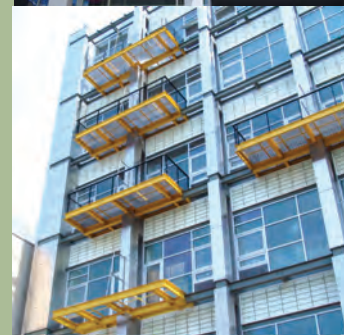


HANDLES WITH
LOCKSET

PERFORMANCE

TYPE	DESCRIPTION	BALCONY DOOR
SIZE	(WIDTH X HEIGHT)	48" X 96"
ASTM E 283-04	STATIC PRESSURE AIR INFILTRATION (6.27 PSF)	0.10 CFM/FT ²
ASTM E 547-00	CYCLIC PRESSURE WATER RESISTANCE (10.03 PSF)	NO LEAKAGE
ASTM E 331-00	STATIC PRESSURE WATER RESISTANCE (10.03 PSF)	NO LEAKAGE
ASTM E 330-02	UNIFORM LOAD DEFLECTION ± PRESSURE	50 PSF
	UNIFORM LOAD STRUCTURAL ± PRESSURE	75 PSF

Clear Anodized
Dark Bronze Anodized
White Painted
Bronze Painted
Custom Finishes Available



Celebrating Over 25 Years of Quality Manufacturing



Est. 1986

GAMCO CORPORATION
MANUFACTURERS OF FENESTRATION PRODUCTS

Tel: (718) 359-8833

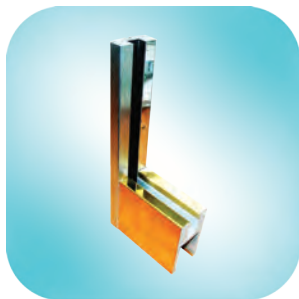
Fax: (718) 359-8661

ARCHITECTURAL METAL CLADDED ENTRANCES



**Stainless Steel
Bronze / Brass
Custom Finishes
Available**

GAMCO architectural metal cladded doors and storefronts provide architects, engineers, contractors and façade installers with innovative and high performance cladding solutions where aesthetics and performance are important.



**I-LINE DOOR ALUM. STILE
CLADDED OVER BRASS**



Celebrating Over 25 Years of Quality Manufacturing



Est. 1986

GAMCO CORPORATION
MANUFACTURERS OF FENESTRATION PRODUCTS

info@gamcocorp.com
www.gamcocorp.com

ARCHITECTURAL METAL COLUMN COVERS

**Aluminum / Stainless Steel
Bronze / Brass / Custom
Finishes Available**



GAMCO architectural column covers are available for interior or exterior applications. Column covers and beam wraps can be round, square, or oval in shape with reveals or butt joints depending upon the custom design requirements.



COLUMN COVERS



Celebrating Over 25 Years of Quality Manufacturing



GAMCO CORPORATION
MANUFACTURERS OF FENESTRATION PRODUCTS

Tel: (718) 359-8833
Fax: (718) 359-8661

ARCHITECTURAL RAILINGS



**Stainless Steel
Bronze / Brass
Custom Finishes
Available**

GAMCO's custom design railings include any models conceptualized by the project's architects or designers. We offer dimensional accuracy in small bends and in large radius bending configurations.



POST HANDRAILS



GLASS RAILINGS



Celebrating Over 25 Years of Quality Manufacturing



Est. 1986

GAMCO CORPORATION
MANUFACTURERS OF FENESTRATION PRODUCTS

info@gamcocorp.com
www.gamcocorp.com

ARCHITECTURAL CANOPIES



**Aluminum / Stainless Steel
Bronze / Brass / Custom
Finishes Available**

GAMCO's custom canopies can be manufactured to your designs and specifications, for a wide variety of commercial and residential uses.



BRACKET WITH
SPIDER FITTINGS



Celebrating Over 25 Years of Quality Manufacturing



Est. 1986

GAMCO CORPORATION
MANUFACTURERS OF FENESTRATION PRODUCTS

Tel: (718) 359-8833

Fax: (718) 359-8661

ARCHITECTURAL METAL FORMED PRODUCTS



**Aluminum / Stainless Steel
Bronze / Brass / Custom
Finishes Available**



GAMCO offers a wide array of metal bending services: from the most demanding bending applications to the simplest metal forming projects. Our in-house equipment enables us to create a variety of different shapes and forms. GAMCO's technical precision continually ensures that all dimensional tolerances in all angles are achieved to your exact specifications.



METAL FORMED DOOR

Celebrating Over 25 Years of Quality Manufacturing



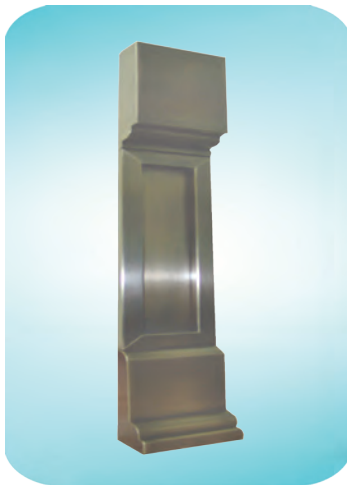
GAMCO CORPORATION
MANUFACTURERS OF FENESTRATION PRODUCTS

info@gamcocorp.com
www.gamcocorp.com

ARCHITECTURAL BAR GRILLES / PERFORATED METALS / LIGHT BOXES



LIGHT BOX



PILASTER COLUMN

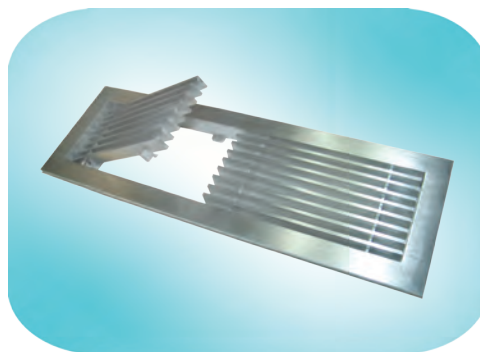


CLOCK TOWER

GAMCO fabricates a variety of custom framing structures for decorative, advertising, and informational light boxes, both indoor and outdoor, in many shapes and sizes. Architectural perforated metals are available in a wide assortment of materials and patterns. GAMCO also offers the highest quality bar grilles for use in floor, wall, sill or ceiling applications with several core and frame styles. Materials include aluminum, brass, bronze and stainless steel, and are available in a number of finishes.



PERFORATED PANEL



BAR GRILLE

**Aluminum / Stainless Steel
Bronze / Brass / Custom
Finishes Available**



Celebrating Over 25 Years of Quality Manufacturing



Est. 1986

GAMCO CORPORATION
MANUFACTURERS OF FENESTRATION PRODUCTS

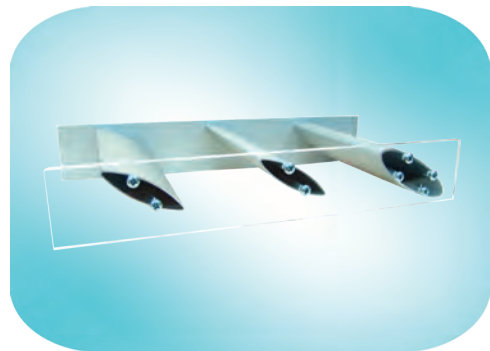
Tel: (718) 359-8833
Fax: (718) 359-8661

NEW ARCHITECTURAL PRODUCTS

ARCHITECTURAL SUNSHADES



GAMCO Architectural Sunshades integrate easily onto the Curtain Wall Systems. The projection creates shading effects that reduce solar heat gain while achieving maximum daylight. Outriggers and brackets are fabricated to custom designs and specifications with standard shapes of air-foil, cylindrical or flat louvers. Custom finishes are also available upon request to provide an almost infinite variety of design elements for architects, engineers and contractors.



SUNSHADES

Celebrating Over 25 Years of Quality Manufacturing



Est. 1986

GAMCO CORPORATION
MANUFACTURERS OF FENESTRATION PRODUCTS

info@gamcocorp.com
www.gamcocorp.com

PRODUCT SELECTION GUIDE

GAMCO Products	Gamco Model / Description	Wall Thickness	Frame Depth	Profile	Wholesale Stock Lengths Available	Glazing Thickness	Minimum Size	Maximum Size without Structural Reinforcement	ASTM Performance				Stocked Colors	Stainless Steel Cladding Available
									Air-Std 6-24psf	Water-psf	Deflect-psf	Struct-psf		
Storefronts 	FG-450 Flushing Glazing	0.085	4-1/2"	1-3/4"	YES	1/4", 3/8" or 1/2"	8" x 8"	10' x 10'	<0.01	10	35	52.5	CA, DU, & WT	YES
	FG-451 Flushing Glazing	0.085	4-1/2"	2"	YES	1"	8" x 8"	10' x 10'	<0.01	12	35	52.5		YES
	FG-451T Thermal Flushing Glazing	0.085	4-1/2"	2"	YES	1"	8" x 8"	10' x 10'	0.015	12	35	52.5	CA, DU & WT	YES
Curtain Walls 	PW-250 Pressure Wall System	0.100	2-3/8"	2-1/2"	YES	1/4" or 1"	12" x 12"	12' x 12'	*	*	*	*	CA, DU	YES
		0.100	3-7/8"	2-1/2"	YES	1/4" or 1"	12" x 12"	15' x 15'	*	*	*	*		YES
		0.125	5-1/2"	2-1/2"	YES	1/4" or 1"	12" x 12"	15' x 30'	<0.01	15	60	90		YES
Skylights & Sunrooms 	Pyramid	0.125	2" to 11"	2"	NO	1/4" to 1"	3' x 3'	22' x 22'	0.01	15	90	120	CA, DU & WT	YES
	Single Slope Lean-To	0.125	2" to 11"	2"	NO	1/4" to 1"	2' x 2'	22' x 200'+	<0.01	15	90	90		YES
	Ridge w/- Gable end	0.125	2" to 11"	2"	NO	1/4" to 1"	2' x 4'	40' x 200'+	0.03	18	120	180		YES
	Ridge	0.125	2" to 11"	2"	NO	1/4" to 1"	2' x 4'	40' x 200'+	*	*	*	*		YES
	Hipped Ridge	0.125	2" to 11"	2"	NO	1/4" to 1"	2' x 4'	36' x 200'+	*	*	*	*		YES
	Straight Eave Sunroom	0.125	2" to 11"	2"	NO	1/4" to 1"	2' x 2' x 2'	22' x 22' x 200'+	*	*	*	*		YES
	Segmented Vault & Dome	0.125	2" to 11"	2"	NO	1/4" to 1"	5' x 5'	30' x 30'	*	*	*	*		YES
	Octagon / Polygon	0.125	2" to 11"	2"	NO	1/4" to 1"	4' x 4'	30' x 30'	*	*	*	*		YES
Architectural Decorative Metal Grills, Cladding, Bending, Shearing & Polishing 	A Wide Range of Architectural Metals, Finishes, Patterns & Styles	20 Ga through 1/4"					2" x 2"	4' x 12'					#4 Satin & #8 Polished S.S. or Bronze	
	Bar Grill	1/8" through 1/4"		Round & Square			2" x 3"	2' x 12'						
Custom Railing Systems & Column Cover 	Railing	16-10 Ga		Round & Square			1" x 3" Diameter	4' x 20'						
	Column Cover	16-10 Ga		Shape			2" x 6"	5' x 14'						

* Pending • Custom sizes, hardware & colors are available

• Other architectural metal finishes are available on request

• CA-Clear Anodized DU-Dark Bronze Anodized WT-White Paint

Celebrating Over 25 Years of Quality Manufacturing

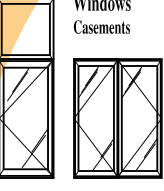
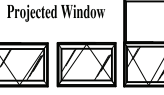



Est. 1986

GAMCO CORPORATION
MANUFACTURERS OF FENESTRATION PRODUCTS

Tel: (718) 359-8833
Fax: (718) 359-8661

PRODUCT SELECTION GUIDE

GAMCO Products	Gamco Model Description	AAMA	Wall Thickness	Frame Depth	Minimum Size	Maximum Size	Performance				Matching Fixed Frame	Screen Available	Flanged Frame	Stocked Colors
		"HC" Heavy Commercial or "C" Commercial					Air-Std 6.24psf	Water-psf	Deflect-psf	Struct-psf				
 Windows Casements	W250C Thermal Single Out-swing	*	0.062	2.5	18" x 24"	30" x 60"	*	*	*	*	W250C Fixed	YES	YES	CA,DU, WT & BP
	W250C Thermal Twin In or Out-swing	*	0.062	2.5	36" x 24"	60" x 60"	*	*	*	*	W250C Fixed	YES	YES	
	W250HC Thermal Single In or Out-swing	C-HC100	0.125	2.5	18" x 24"	36" x 60"	0.11	27	100.0	150	W250HC Fixed	YES	YES	
	W250HC Thermal Twin In or Out-swing	*	0.125	2.5	36" x 24"	72" x 60"	*	*	*	*	W250HC Fixed	YES	YES	
 Projected Window	W250C Thermal Projected In or Out	P-C60	0.062	2.5	18" x 18"	60" x 48"	0.03	9.0	65.0	97.5	W250C Fixed	YES	YES	
	W250HC Thermal Projected In or Out	P-HC70	0.125	2.5	18" x 18"	60" x 48"	0.07	15	70.0	105	W250HC Fixed	YES	YES	
 Fixed Lite	W250C Fixed Thermal	F-C60	0.062	2.5	24" x 24"	84" x 84"	<0.03	9.0	65.0	97.5	YES	NO	YES	
	W250HC Fixed Thermal	F-HC70	0.125	2.5	24" x 24"	84" x 84"	<0.07	15	70.0	105	YES	NO	YES	
 Louver	L250 Louver 30° & 45° blade	*	0.062	2.5	11" x 22"	60" x 84"	*	*	*	*	YES	NO	YES	CA,DU & WT
	L325 Louver 30° & 45° blade	*	0.062	3.25	11" x 22"	60" x 84"	*	*	*	*	YES	NO	YES	
 Dual-Action	TT250 Thermal Tilt/Turn	*	0.125	2.5	18" x 24"	48" x 60"	*	*	*	*	YES	YES	YES	CA,DU, WT,BP
 Structural glazing ST275 project-out	ST275 Project Out Only	*	0.125	2.75	18" x 18"	60" x 48"	*	*	*	*	Structural Glazing	NO	NO	CA,DU,WT
	ST250 Project-out Window	*	0.125	2.5	36" x 24"	72" x 60"	*	*	*	*	Structural Glazing	YES	NO	BP
	ST250 Fixed	*	0.125	2.5	24" x 24"	84" x 84"	*	*	*	*	YES			
 Balcony Door	BD325 Thermal Balcony Door	AW-50	0.125	3.25	18" x 24"	40" x 96"	0.10	10.03	50.16	75.24	YES	NO	NO	CA,DU, WT,BP

* Pending • Custom sizes, hardware & colors are available

• CA-Clear Anodized DU-Dark Bronze Anodized WT-White Paint BP-Bronze Paint

Celebrating Over 25 Years of Quality Manufacturing

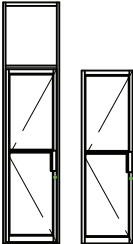
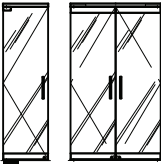
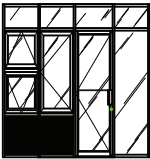


Est. 1986

GAMCO CORPORATION
MANUFACTURERS OF FENESTRATION PRODUCTS

info@gamcocorp.com
www.gamcocorp.com

PRODUCT SELECTION GUIDE

GAMCO Products	Gamco Model	Description	Wall/Glass Thickness	Door Depth	HB & HS350	Narrow Stile D200		Medium Stile D350		Wide Stile D500		S.S.,Brass Bronze & Cooper Cladding Available	Stocked Colors	Glass & Other Panel Options Available
					Top & Bottom Rail	Top Rail Height	Bottom Rail Height	Top Rail Height	Bottom Rail Height	Top Rail Height	Bottom Rail Height			
ALL STANDARD & CUSTOM-BUILT ALUMINUM DOORS INCLUDE TIE ROD AND WELDED CONSTRUCTION FOR MAXIMUM STRENGTH AND RIGIDITY														
<div>Entrance Doors</div> 	D200 Narrow, D350 Medium, D500 Wide Stile	Offset Pivot or Butt Hinge Door only	. 125	1-3/4"		2-1/8"	3-1/8"	3-1/2"	5",7-1/2" or 10"	5"	7-1/2" or 10"	YES	CA, DU, & WT Cladding #4 Satin & #8 polish	1/4", 3/8", 1/2", 3/4" 1" & 1-1/2"
		Offset Pivot or Butt Hinge Door & Frame	. 125	1-3/4"		2-1/8"	3-1/8"	3-1/2"	5",7-1/2" or 10"	5"	7-1/2" or 10"	YES		
		Offset Pivot or Butt Hinge Door & Frame w/- Transom	. 125	1-3/4"		2-1/8"	3-1/8"	3-1/2"	5",7-1/2" or 10"	5"	7-1/2" or 10"	YES		
	BD200 Balcony	Continuous or Butt Hinge European Handle Door & Frame	. 125	1-3/4"		2-1/8"	3-1/8"	3-1/2"	5",7-1/2" or 10"	5"	7-1/2" or 10"	YES		
	Bi-Fold Doors	Continuous or Butt Hinge Door & Frame	. 125	1-3/4"		2-1/8"	3-1/8"	3-1/2"	5",7-1/2" or 10"	5"	7-1/2" or 10"	YES		
ALL STANDARD & CUSTOM-BUILT ALUMINUM DOORS CAN BE APPLIED CONTINUOUS HINGE, CONCEALED OVERHEAD CLOSER & PANIC DEVICE AS AN OPTION. OPTION FOR MAXIMUM BOTTOM RAIL HEIGHT WITH EXTENSION IS 20"														
<div>Herculite Doors</div> 	HB & HS 350 Herculite Door and Glass Walls	P-Type Herculite Door w/- Header & C.O.C.	1/2" or 3/4"	1-3/4"	3-3/8"							YES	CA, DU, & WT Cladding #4 Satin & #8 Polish	3/8", 1/2" & 3/4"
		P-Type Herculite Door w/- Header & Floor Closer	1/2" or 3/4"	1-3/4"	3-3/8"							YES		
		BP-Type Herculite Door w/- Header & C.O.C.	1/2"	1-3/4"	3-3/8"							YES		
		BP-Type Herculite Door w/- Header & Floor Closer	1/2"	1-3/4"	3-3/8"							YES		
		Ultra Narrow Stile Door w/- Header & Floor Closer	3/8"	1-3/4"	3-3/8"							YES		
		Herculite Glass Wall	1/2" or 3/4"	1-3/4"	3-3/8"							YES		
<div>Customized S.S.</div> 	Fully Custom Stainless Steel Doors and Windows	Doors	12 to 16 Ga	Any	Any							N/A	#4 Satin	1/4", 3/8", 1/2", 3/4" & 1"
		Fixed Lites	12 to 16 Ga	Any	Any							N/A		
		Casements	12 to 16 Ga	Any	Any							N/A		
		Projected	12 to 16 Ga	Any	Any							N/A		

* Custom sizes, hardware & finishes are available

* CA-Clear Anodized DU-Dark Bronze Anodized WT-White Paint BP-Bronze Paint

General Conditions

- ☐ Since local laws and building codes governing fenestration products vary widely and are subject to interpretation, this "Product Selection Guide" should only be used as reference but not for specifications.
- ☐ To ensure proper application, please review with GAMCO representatives the design load, existing conditions and configurations before preparing your plan specifications.
- ☐ Since GAMCO products are custom engineered to meet project requirements, GAMCO reserves the right to change without prior notice, specifications, drawings and products in this guide.

Celebrating Over 25 Years of Quality Manufacturing

Tel: (718) 359-8833
Fax: (718) 359-8661

www.gamcocorp.com



TERRACE/ SLIDING PATIO DOORS
PROJECTED WINDOWS
STAINLESS STEEL FABRICATION
BENDING & CLADDING

Celebrating Over 25 Years of Quality Manufacturing